



**India Meteorological Department
(Ministry of Earth Sciences)**

BULLETIN NO.13 (BOB/02/2022)

TIME OF ISSUE: 1430 HOURS IST

DATED: 22.03.2022

FROM: INDIA METEOROLOGICAL DEPARTMENT (FAX NO. 24643965/24699216/24623220)

TO: CONTROL ROOM, NDM, MINISTRY OF HOME AFFAIRS (FAX.NO. 23093750)

CONTROL ROOM NDMA (FAX.NO. 26701729)

CABINET SECRETARIAT (FAX.NO.23012284, 23018638)

PS TO HON'BLE MINISTER FOR S & T AND EARTH SCIENCES (FAX NO.23316745)

SECRETARY, MOES (FAX NO. 24629777)

H.Q. (INTEGRATED DEFENCE STAFF AND CDS) (FAX NO. 23005137/23005147)

DIRECTOR GENERAL, DOORDARSHAN (23385843)

DIRECTOR GENERAL, AIR (23421105, 23421219)

PIB MOES (FAX NO. 23389042)

UNI (FAX NO. 23355841)

D.G. NATIONAL DISASTER RESPONSE FORCE (NDRF) (FAX NO. 26105912, 2436 3260)

DIRECTOR GENERAL INDIAN COAST GUARD, FAX NO. 011-23383196

DIRECTOR, PUNCTUALITY, INDIAN RAILWAYS (FAX NO. 23388503)

ADMINISTRATOR, ANDAMAN & NICOBAR ISLANDS (FAX NO. 03192- 232656)

CHIEF SECRETARY, TAMIL NADU (FAX NO 044-25672304)

CHIEF SECRETARY, PUDUCHERRY (FAX NO 0413-2334145)

CHIEF SECRETARY, ANDHRA PRADESH (FAX NO. 0863-2441029, 08645-246600)

CHIEF SECRETARY, ODISHA (FAX NO. 0674-2536660)

CHIEF SECRETARY, WEST BENGAL (FAX NO. 033-22144328)

Subject: Deep Depression over north Andaman Sea and adjoining areas of eastcentral Bay of Bengal, close to Myanmar Coast.

The Deep Depression over north Andaman Sea and adjoining areas of eastcentral Bay of Bengal, moved nearly northwards with a speed of 16 kmph during last 06 hours, and lay centered at 1130 hours IST of today, the 22nd March, over the same region near latitude 15.8°N and longitude 94.2°E close to Myanmar coast, about 350 km north-northeast of Mayabundar (Andaman Islands), 490 km north-northeast of Port Blair (Andaman Islands), 240 km, west-southwest of Yangon (Myanmar) and 300 km south-southwest of Thandwe (Myanmar).

It would continue to move nearly northwards and cross Myanmar coast within next few hours as a deep depression between latitude 16°N & 18°N.

Forecast track and intensity are given in the following table:

Date/Time (IST)	Position (Lat. °N/ Long. °E)	Maximum Sustained Surface Wind speed (kmph)	Category of Cyclonic Disturbance
22.03.22/1130	15.8/94.2	50-60 gusting to 70	Deep Depression
22.03.22/1730	16.7/94.4	45-55 gusting to 65	Depression
22.03.22/2330	17.6/94.8	40-50 gusting to 60	Depression

Warnings:

(i) Rainfall

No heavy rainfall for Andaman Islands during 22nd March with light to moderate rainfall at a few places over the same region.

(ii) Wind warning

22nd March: Squally winds speed reaching 50-60 kmph gusting to 70 kmph prevails over north Andaman Sea & adjoining eastcentral Bay of Bengal and along & off Myanmar coast. It is likely to decrease gradually becoming 45-55 kmph gusting to 65 kmph along and off Myanmar coast and adjoining east central Bay of Bengal and north Andaman Sea from 22nd from evening for subsequent 12 hours.

(iii) Sea condition

- **22nd March:** Sea condition is very likely to become rough to very rough over north Andaman Sea & adjoining eastcentral Bay of Bengal, along and off Myanmar coast and along & off north Andaman islands during next 12 hours.

(iv) Fishermen Warning (Graphics enclosed)

Fishermen are advised not to venture into Eastcentral Bay of Bengal, North Andaman Sea, along & off Myanmar coast and along & off north Andaman Islands on 22nd March.

Next bulletin will be issued at 2030 hours IST of 22rd March, 2022.

(S. P. Singh)
Scientist-C, RSMC, New Delhi

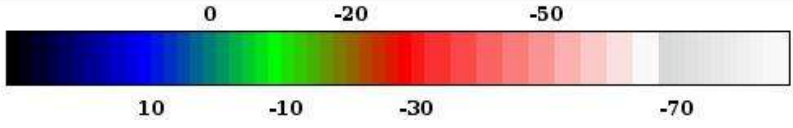
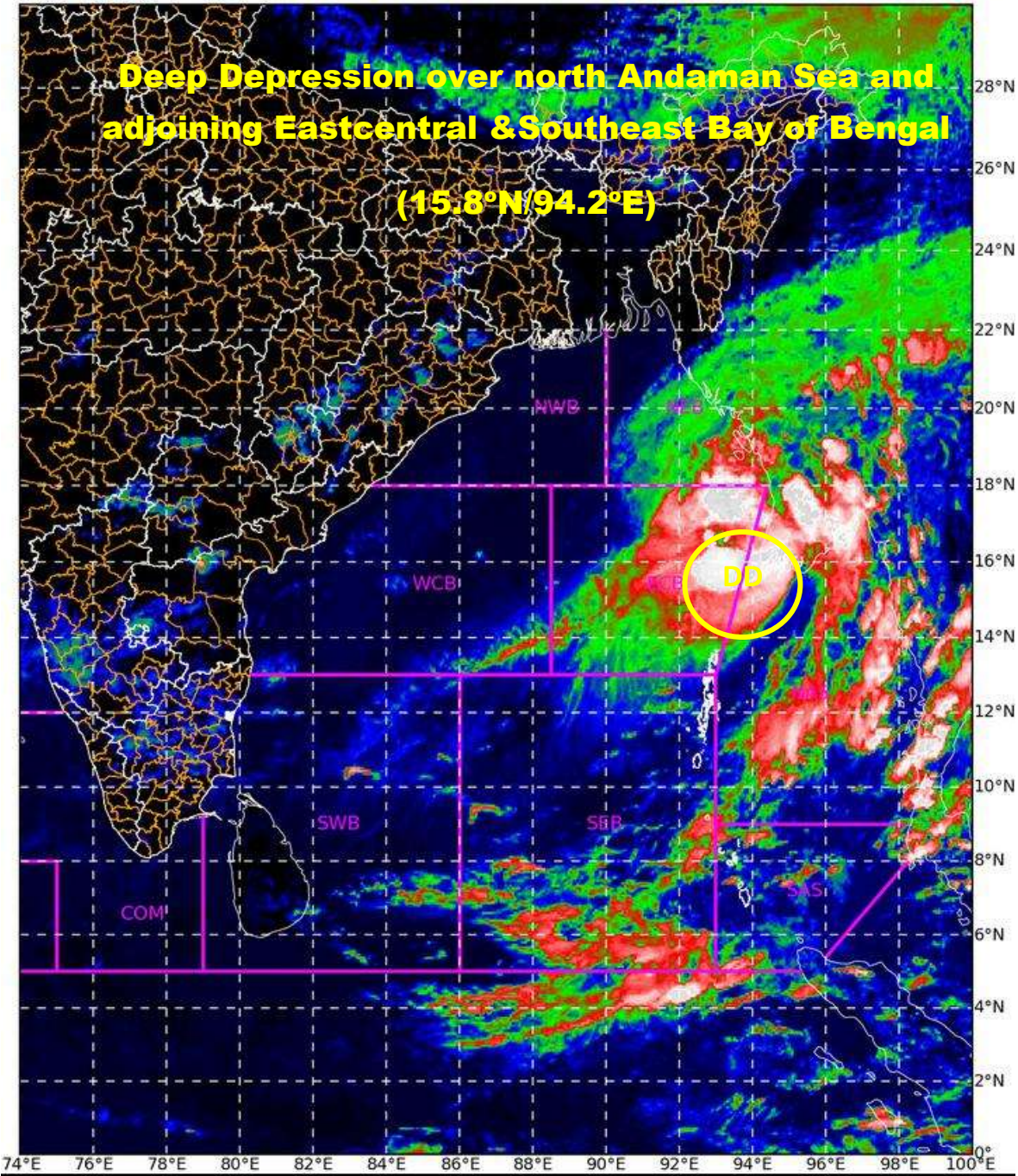
Copy to: ACWC Kolkata/ ACWC Chennai/ CWC Bhubaneswarr/CWC Vishakhapatnam/MO Port Blair

LEGEND: Heavy Rainfall: 64.5 to 115.5mm, **Very Heavy Rainfall:** 115.6 to 204.4mm **Most Places:** more than 76% of total stations, **Isolated Places:** Less than 25% of total

SAT : INSAT-3D IMG 22-03-2022/(0800 to 0827) GMT

IMG_TIR1_TEMP 10.8 um 22-03-2022/(1330 to 1357) IST

L1C Mercator



Celsius
IMD, DELHI

DD: DEEP DEPRESSION



OBSERVED AND FORECAST TRACK ALONGWITH CONE OF UNCERTAINTY OF DEEP DEPRESSION OVER NORTH ANDAMAN SEA AND ADJOINING AREAS OF EASTCENTRAL BAY OF BENGAL BASED ON 0600 UTC OF 22nd MARCH 2022



DATE/TIME IN UTC
 IST=UTC + 0530
 L: LOW PRESSURE AREA
 WML: WELL MARKED LOW PRESSURE AREA
 D: DEPRESSION (17-27 KT)
 DD: DEEP DEPRESSION (28-33 KT)
 CS: CYCLONIC STORM (34-47 KT)
 SCS: SEVERE CYCLONIC STORM (48-63KT)
 VSCS: VERY SEVERE CYCLONIC STORM (64-89 KT)
 ESCS: EXTREMELY SEVERE CYCLONIC STORM (90-119 KT)
 SuCS: SUPER CYCLONIC STORM (≥20 KT)

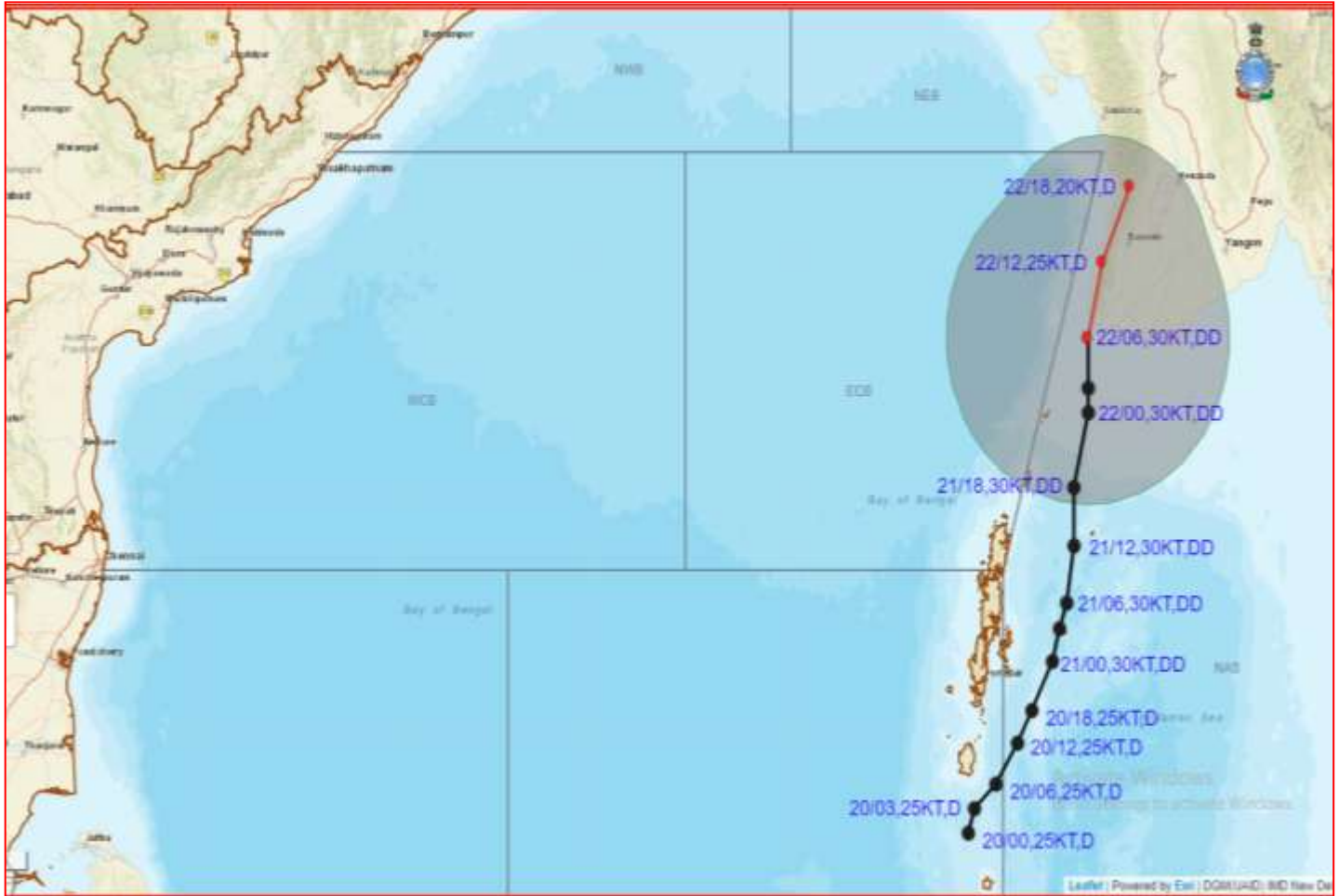
- LESS THAN 34 KT
- 34-47 KT
- ≥ 48 KT
- OBSERVED TRACK
- FORECAST TRACK
- CONE OF UNCERTAINTY

STATIONS	DISTANCE(KM) AND DIRECTION FROM STATIONS		
	22.03.22/0600	22.03.22/1800	22.03.22/1200
Yangon	240,WSW	170,WNW	190,W
Tandwe	300,S	110,SSE	200,S
Hut bay	610,NNE	820,NNE	710,NNE
Portblair	490,NNE	700,NNE	590,NNE
Maya bundar	350,NNE	560,NNE	450,NNE

N:NORTH, NNE:NORTH-NORTHEAST, NE:NORTHEAST, ENE:EAST-NORTHEAST, E:EAST, SE:SOUTHEAST, SSE:SOUTH-SOUTHEAST, S:SOUTH, SSW:SOUTH-SOUTHWEST, SW:SOUTHWEST, WSW:WEST-SOUTHWEST, W:WEST, WNW:WEST-NORTHWEST, NW:NORTHWEST, NNW:NORTH-NORTHWEST



OBSERVED AND FORECAST TRACK ALONGWITH QUADRANT WIND ISTRIBUTION OF DEEP DEPRESSION OVER NORTH ANDAMAN SEA AND ADJOINING AREAS OF EASTCENTRAL BAY OF BENGAL BASED ON 0600 UTC OF 22nd MARCH 2022



DATE/TIME IN UTC
 IST=UTC + 0530
 L: LOW PRESSURE AREA
 WML: WELL MARKED LOW PRESSURE AREA
 D: DEPRESSION (17-27 KT)
 DD: DEEP DEPRESSION (28-33 KT)
 CS: CYCLONIC STORM (34-47 KT)
 SCS: SEVERE CYCLONIC STORM (48-63KT)
 VSCS: VERY SEVERE CYCLONIC STORM (64-89 KT)
 ESCS: EXTREMELY SEVERE CYCLONIC STORM (90-119 KT)
 SuCS: SUPER CYCLONIC STORM (≥20 KT)

● LESS THAN 34 KT
 ○ 34-47 KT
 ● ≥ 48 KT
 — OBSERVED TRACK
 — FORECAST TRACK
 ○ CONE OF UNCERTAINTY
 AREA OF MAXIMUM SUSTAINED WIND SPEED:
 ■ 28-33 KT (52-61 KMPH)
 ■ 34-49 KT (62-91 KMPH)
 ■ 50-63 KT (92-117 KMPH)
 ■ ≥ 64 KT (≥118 KMPH)

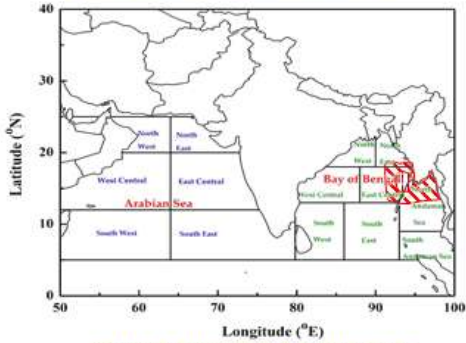
IMPACT OVER THE SEA

MSW (knot/kmph)	Impact	Action
28-33 (52-61)	Very rough seas	Total suspension of fishing operations
34-49 (62-91)	High to very high seas	Total suspension of fishing operations
50-63 (92-117)	Very high seas	Total suspension of fishing operations
≥ 64 (≥118)	Phenomenal	Total suspension of fishing operations

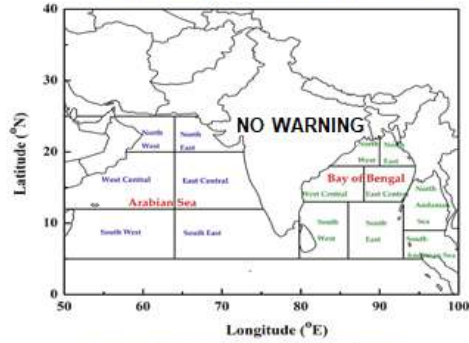
Fisherman Warning

INDIA METEOROLOGICAL DEPARTMENT FISHERMAN WARNING FOR BAY OF BENGAL AND ARABIAN SEA

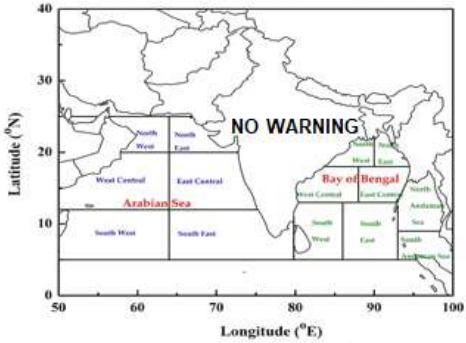
DAY-1: 22.03.2022/0600 UTC TO 23.03.2022/0600 UTC



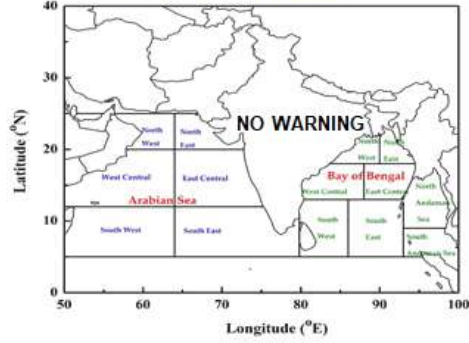
DAY-2: 23.03.2022/0600 UTC TO 24.03.2022/0600 UTC



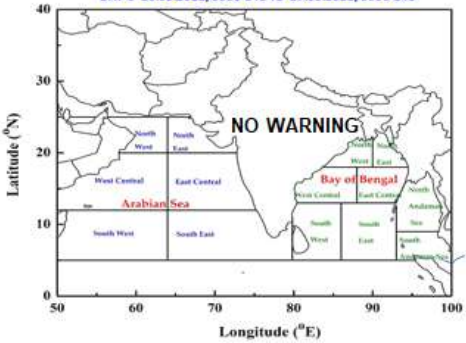
DAY-3: 24.03.2022/0600 UTC TO 25.03.2022/0600 UTC







DAY-4: 25.03.2022/0600 UTC TO 26.03.2022/0600 UTC

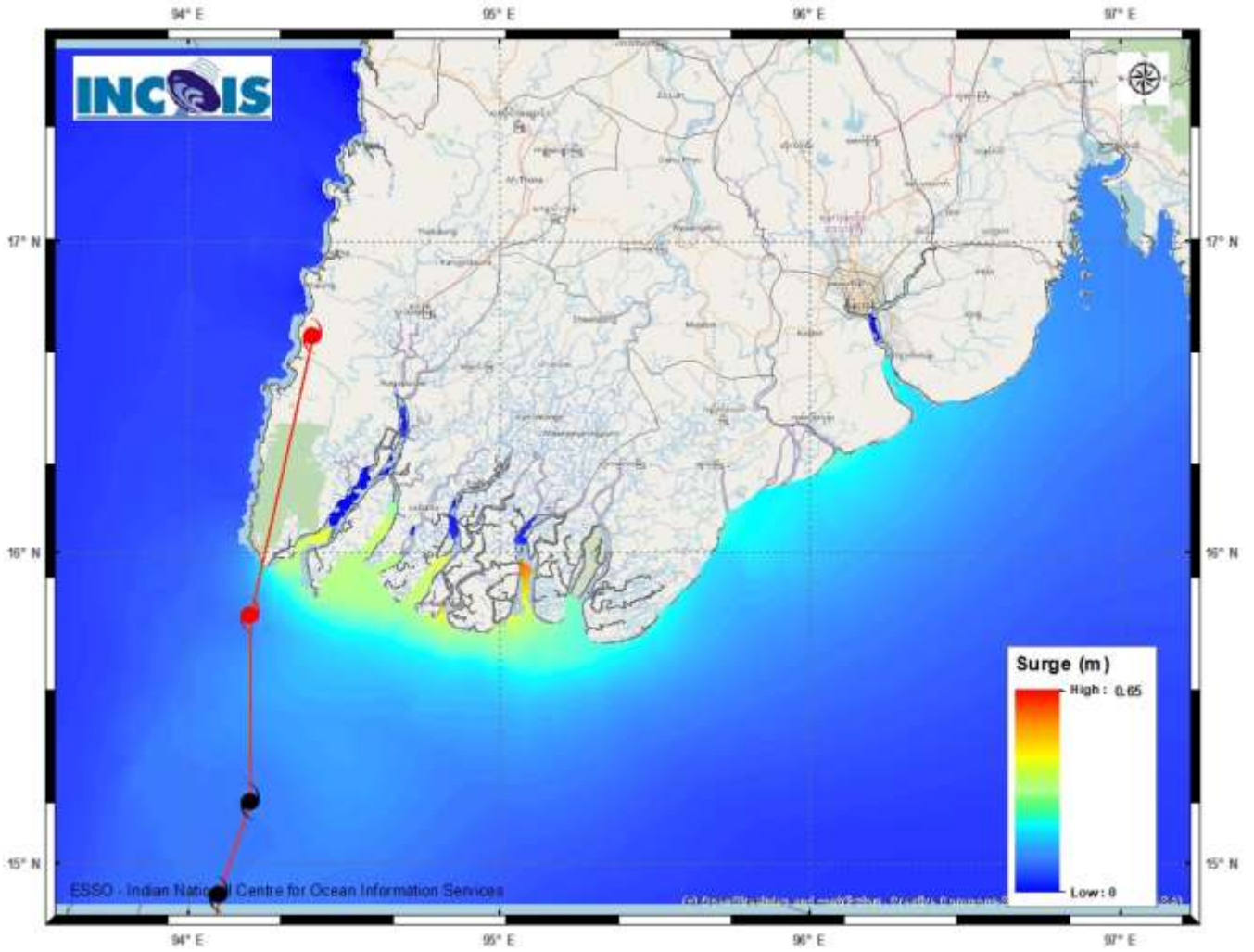


DAY-5: 26.03.2022/0600 UTC TO 27.03.2022/0600 UTC



AREA UNDER FISHERMEN WARNING

-  40-50 KMPH GUSTING TO 55 KMPH (SQUALLY WEATHER)
-  45-55 KMPH GUSTING TO 65 KMPH
-  50-60 KMPH GUSTING TO 70 KMPH
-  65-75 KMPH GUSTING TO 85 KMPH



Storm Surge Guidance for Myanmar coast.